

RISK MANAGEMENT -Diesel Fuel

Emergency Power Back Up Systems (EPS) that include a Diesel Generator must have a safe and secure supply of Diesel Fuel - at all times.

Diesel Generators are meant to secure and protect your valuable Assets.
If they fail to start when required this could cause

- **Disruption of Business**
- **Loss of Customers and \$\$\$\$**
- **Loss of Life**

Are you confident that your Diesel Fuel Generator will always start when required?

The most common cause of Failure of an EPS can be attributed to either;

- Dirty Fuel
- Flat Batteries

Both are easy to eliminate + Both are inexpensive components

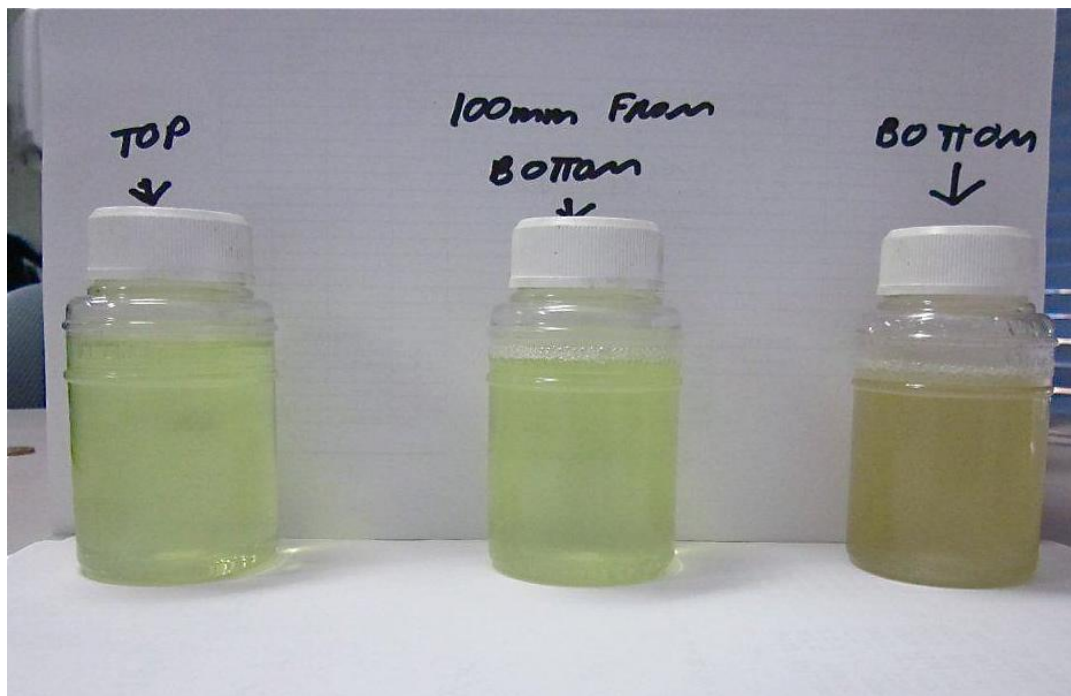
Discussion Point??

Not Maintaining Batteries may be a VIOLATION in some regions?

However, Maintaining Clean Fuel is only a RECOMMENDATION!

Quite often "dirty fuel" is overlooked on the false "understanding" that Diesel is stable and will remain clean and useable for a long while.

Don't assume that if it is clear near the top, then it should be OK all the way through!!



ULS Diesel can start to degrade in as little as one month.

This is known as "**Accelerated Ageing**".

Accelerated Ageing starts at the Water-Fuel interface and can show as "feint discolouration", to "slightly cloudy".



All Risk Management evaluations should include the consideration of:
"What if my stored diesel is contaminated and I am not aware of it?"

It is relatively simple, quick and economic to become assured that your Diesel Fuel is **safe and clean at all times**.

There are four easy to follow steps;

1. Determine the type and amount of contamination that is present in your Diesel Fuel. We can collect accurate samples from the very bottom of your Bulk Tank (10mm off bottom) that can be visually assessed or sent to an independent analytical laboratory for analyses.

2. Remove and dispose of the bulk contaminants, including condensed water; settled sludge; biological gels and growth; rust; silt,; etc.

3. Filter (Polish) the diesel fuel to remove very fine particles and water until it is of optimum quality - clear, clean and safe to use.

4. Maintain the optimum quality by gently recycling the diesel fuel, on a regular basis, with an automatic, programmable system with sensors and alarms that alert you to any aspect that may need attention.



An automatic **Diesel Fuel Maintenance System** can be specified and installed onto any size bulk storage tank.

These systems ensure that Diesel Fuel is ALWAYS clean & dry and ready to use.

"When the lights go out.....it's too late to clean your fuel"